

MONTHLY MEMBERSHIP PROGRESS REPORT

District 13 OH1

Results as of: 5/31/2024

GMT:

LOCATION OHIO

GMT CA

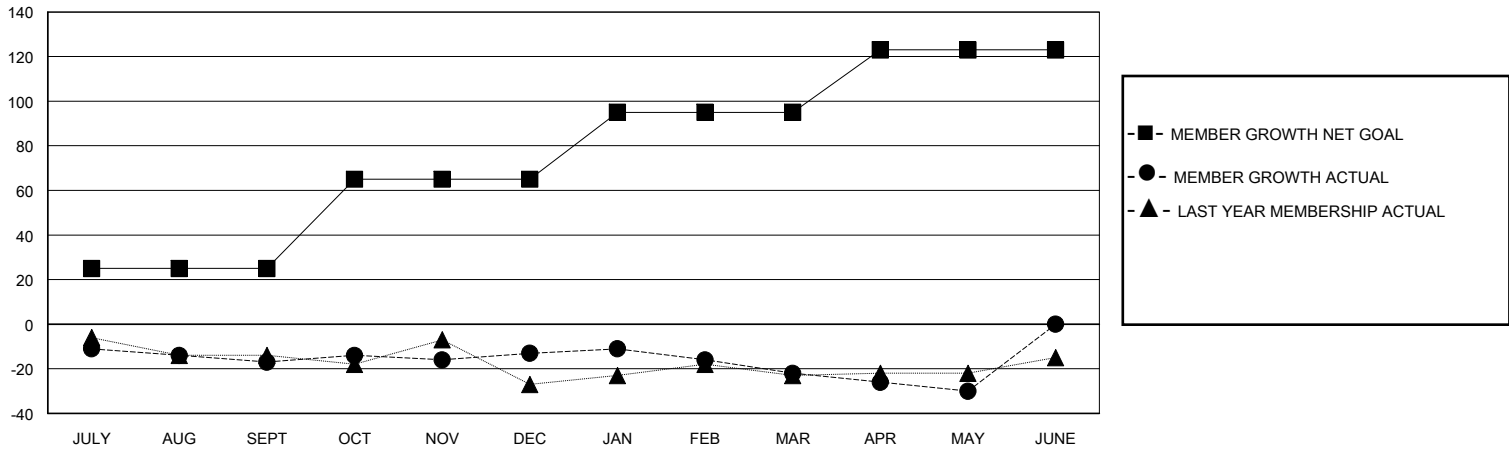
Clubs			
RESULTS FOR 2023-2024			
QUARTER	NEW CLUB GOAL	NEW CLUBS	DROPPED CLUBS
JULY/AUG/SEPT	0	0	0
OCT/NOV/DEC	1	0	0
JAN/FEB/MAR	0	0	0
APR/MAY/JUNE	0	0	0

Members			
RESULTS FOR 2023-2024			
QUARTER	MEMBER GROWTH NET GOAL	MEMBER GROWTH ACTUAL	DROPPED MEMBERS ACTUAL (including transfers)
JULY/AUG/SEPT	25	17	32
OCT/NOV/DEC	40	24	19
JAN/FEB/MAR	30	11	18
APR/MAY/JUNE	28	8	15

GOALS AND ACTUAL NEW CLUBS CUMULATIVE



GOALS AND ACTUAL MEMBERS CUMULATIVE



DROPPED CLUBS: 0	22 CLUBS OF 49 ADDED 1 OR MORE NEW MEMBERS	GENDER DISTRIBUTION MALE 1,105 (78.48%) FEMALE 303 (21.52%)
DROPPED MEMBERS DECEASED 23 CLUB CANCELLED 0 OTHER 61 TOTAL 84	CLICK HERE FOR CUMULATIVE MEMBERSHIP DATA	TOTAL FAMILY UNIT MEMBERS 242 FAMILY MEMBERS PAYING HALF DUES 124